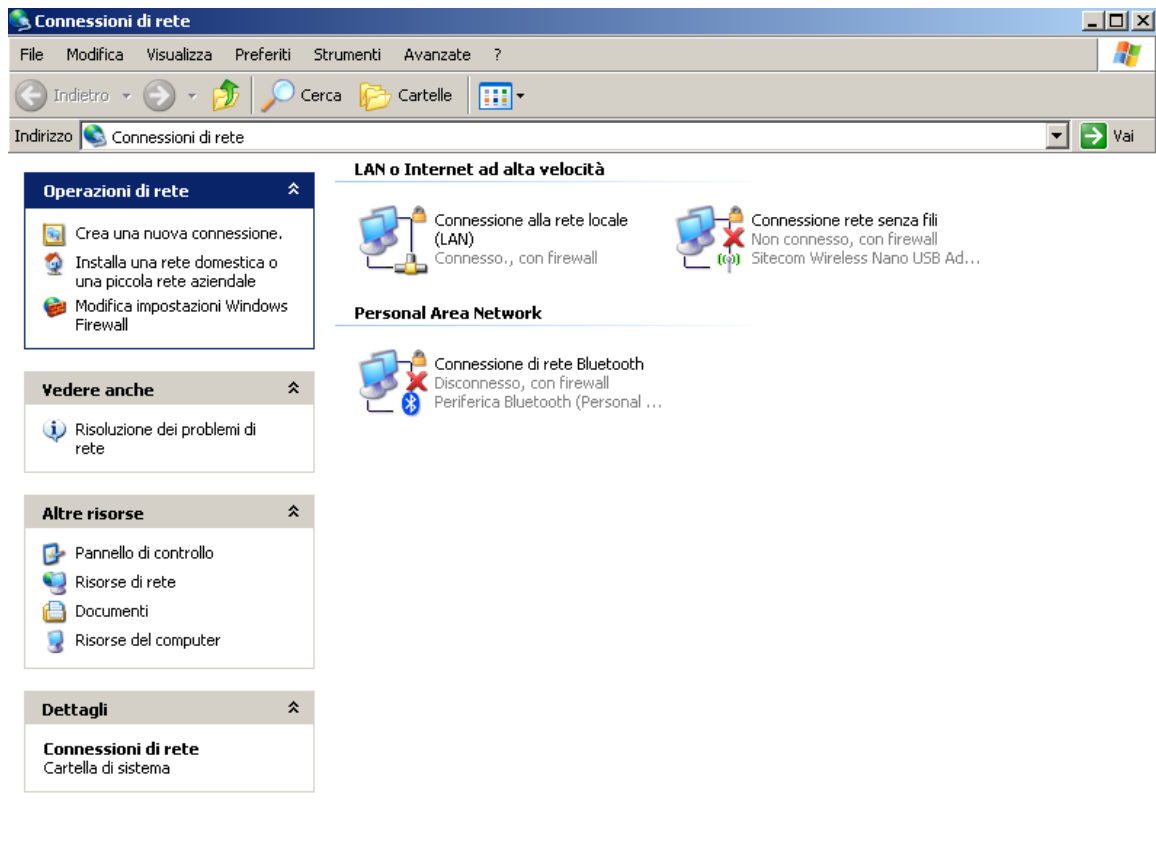
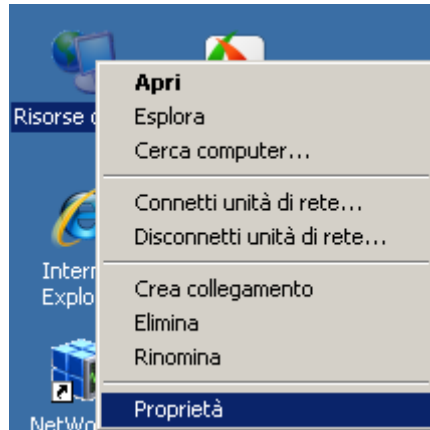
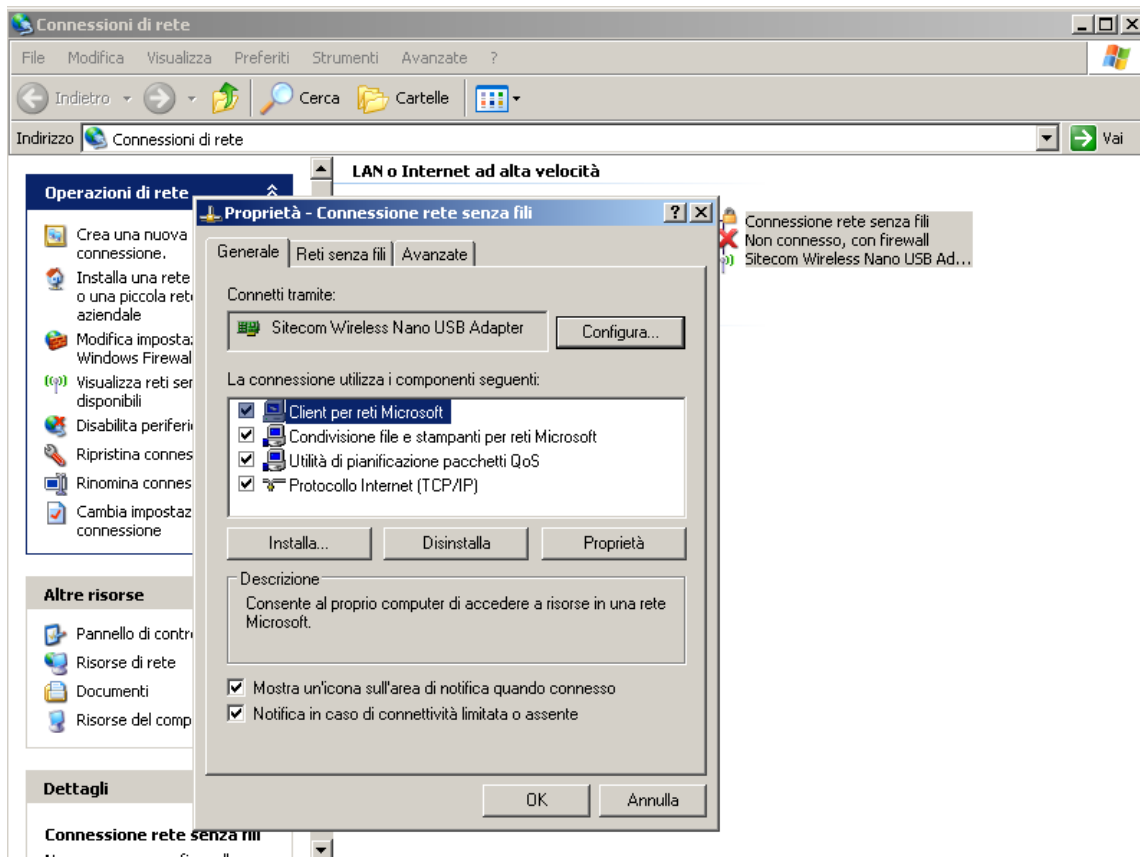
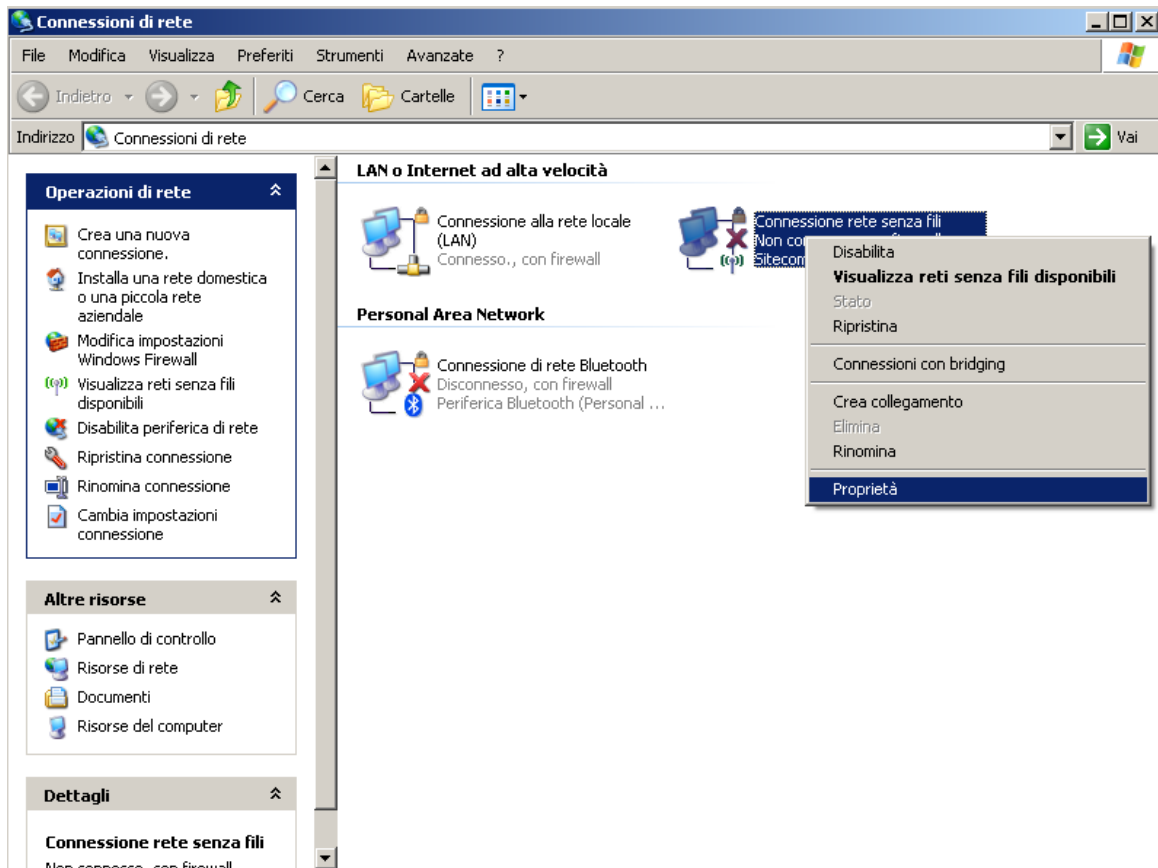


LUISSwpa wireless network configuration for XP

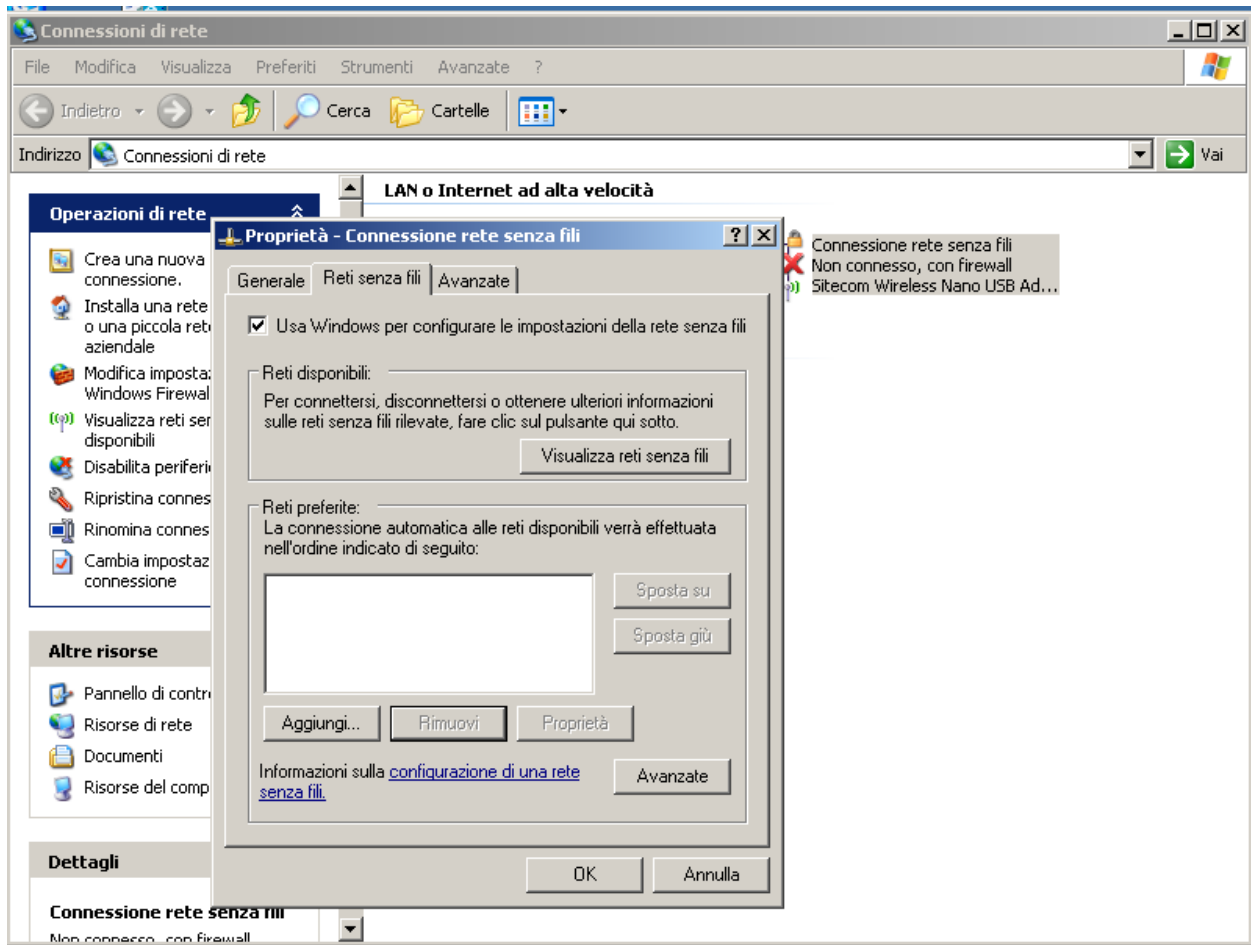
- 1) Select **“Properties”** by right-clicking with your mouse on the My Network Places icon on your desktop:



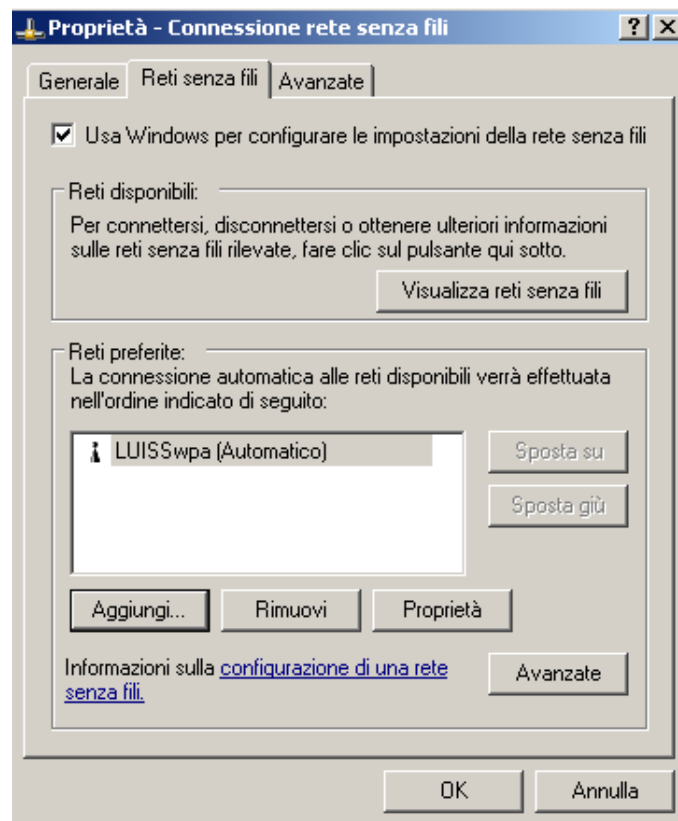
- 2) Select **“Properties”** and right-click with your mouse on the **“Wireless Network Connections”** icon:



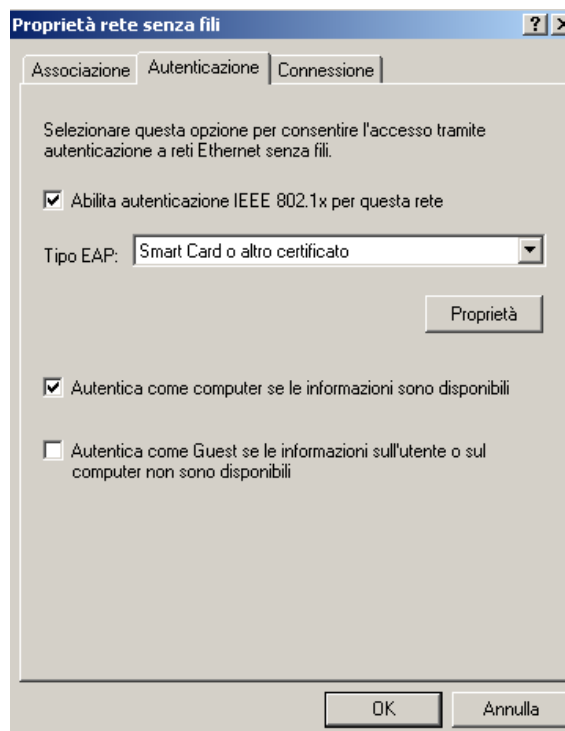
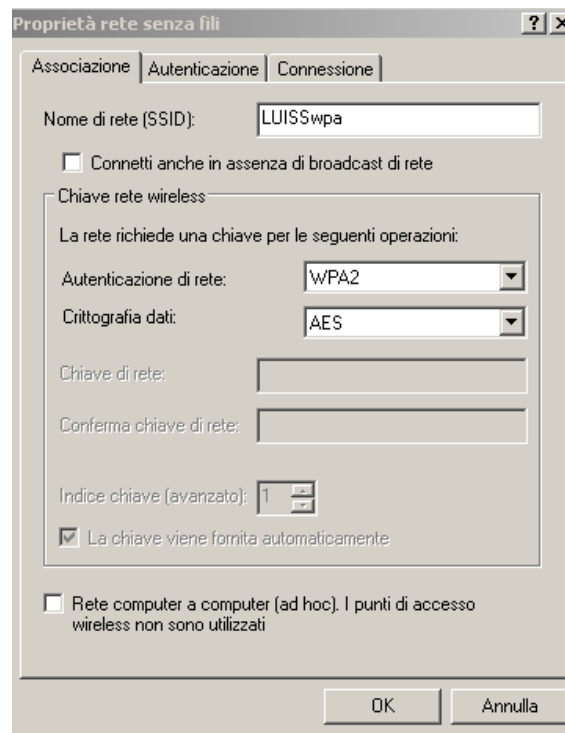
3) Select "Wireless Network Connections":



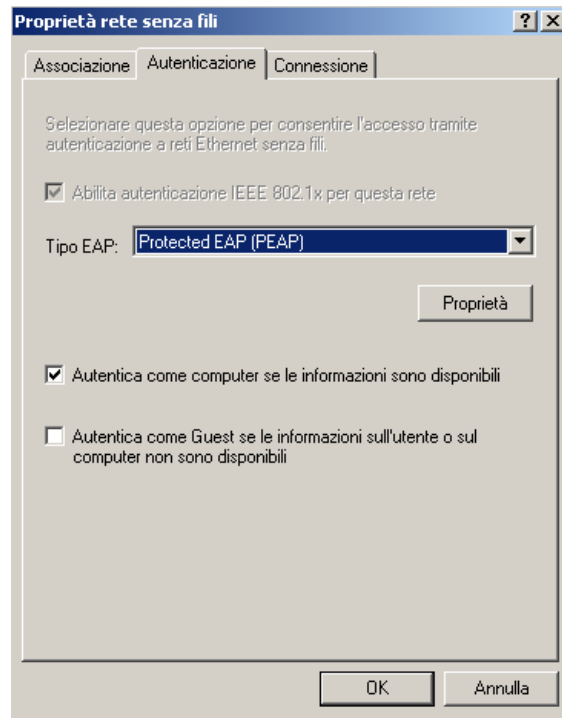
4) Click on “**View available wireless networks**” as in the image above:



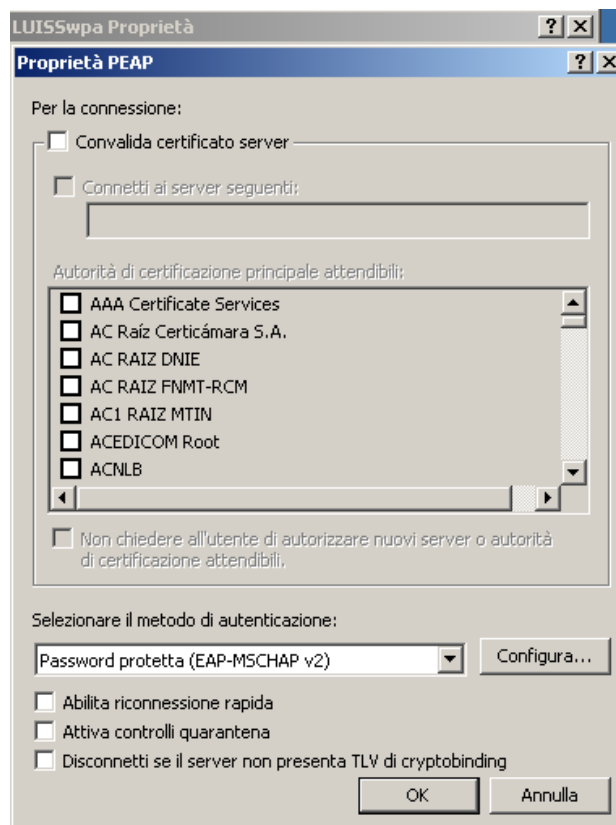
5) Now click on “**Properties**” as in the image above, and select “**Authentication**”:



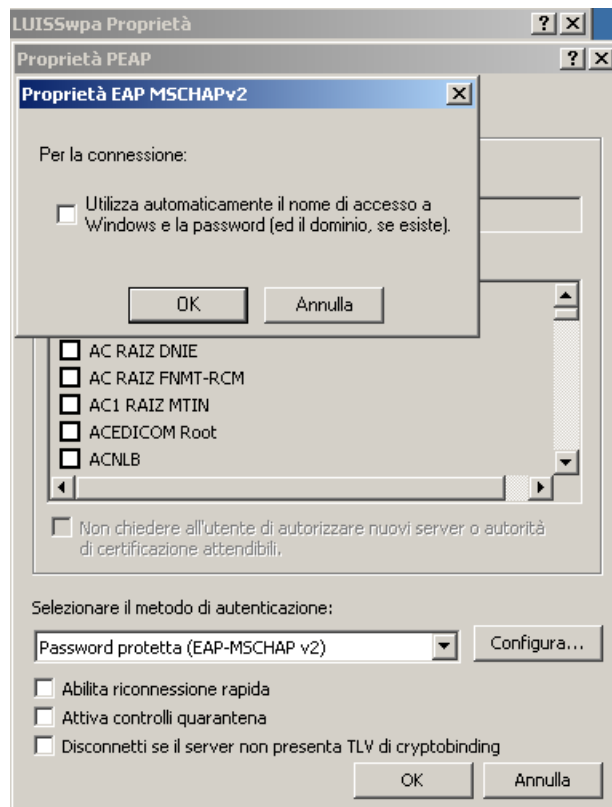
6) Under “EAP type”, use the drop-down menu to select “**Protected EAP**” instead of “**Smart Card...**”:



7) Under PEAP, click on **“Properties”**, as indicated in the image above:



8) Uncheck **“Enable Fast Reconnect”** and click on **“Configure”**, next to **“Select Authentication Method”** where you will then have to uncheck **“Automatically use my Windows logon name.....”**:



9) Once you're here, the WiFi network will be configured and you will be asked to provide your username and password:



10) When you click on "Click here to select a certificate or other credentials for connection to the network LUISSwpa", the following authentication window will appear:

